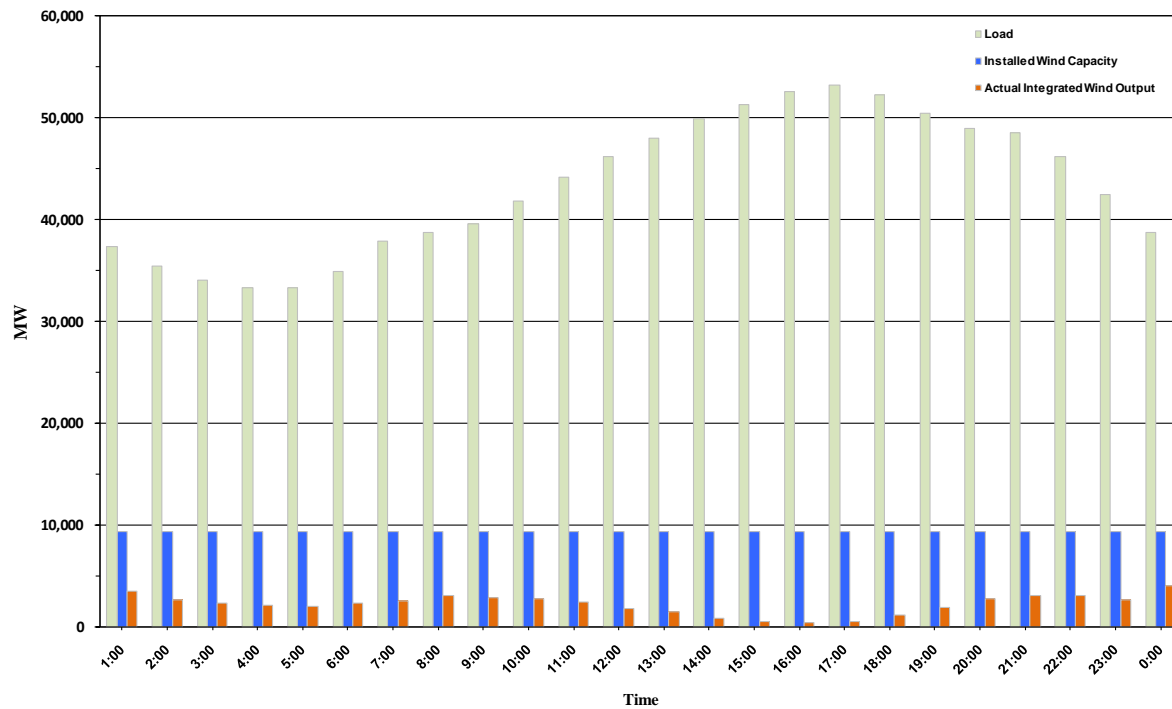




ERCOT Grid Operations Wind Penetration Report: 09/02/10

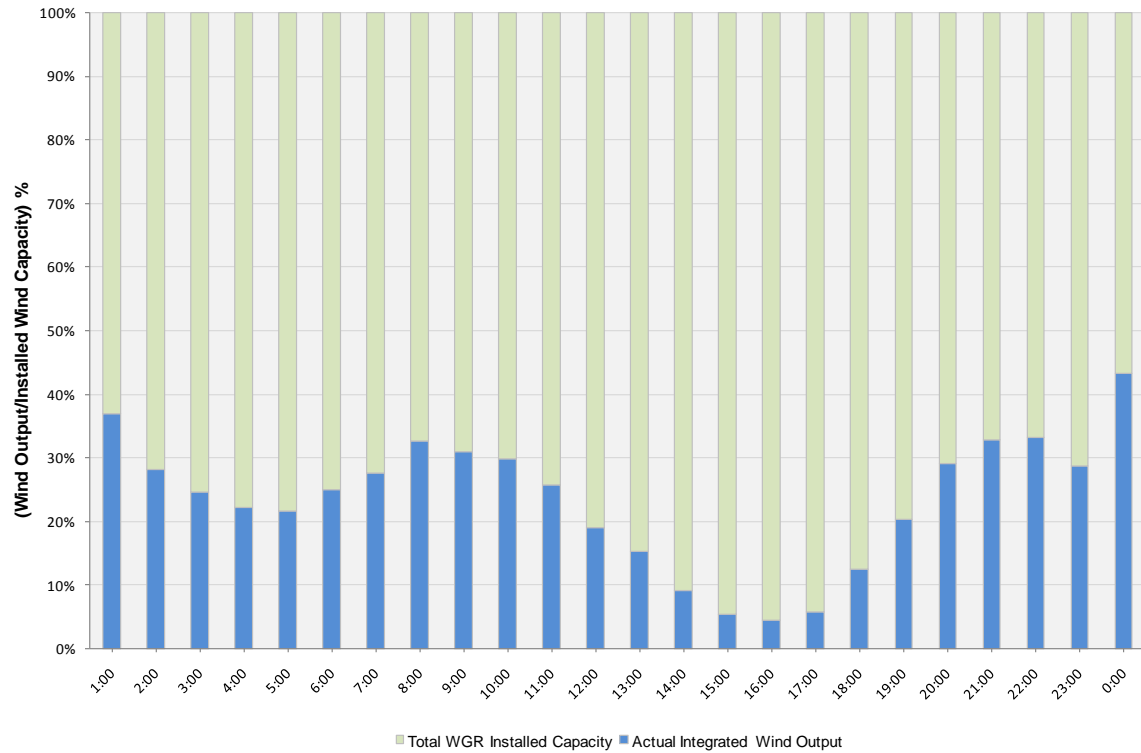
Peak Load	53,238 MW
Load Peak Hour	17
Wind Record 06/12/10	7016 MW
Max Wind value	5051 MW
Wind Peak Hour	23:53:12
Wind Penetration %	13.45

Hourly Average Actual Load vs. Actual Wind Output
09-02-2010

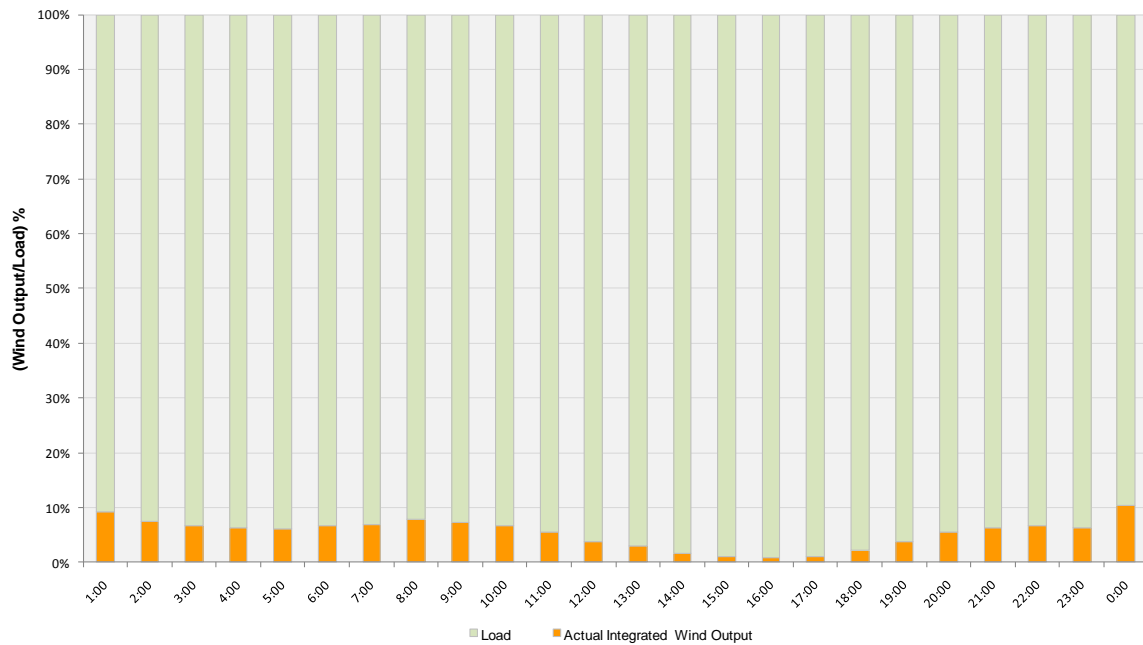




Actual Wind Output as a Percentage of the Total Installed Wind Capacity
09-02-2010



Actual Wind Output as a Percentage of the ERCOT Load
09-02-2010





ERCOT Load vs. Actual Wind Output 08/26/10 - 09/02/10

